



September 2014 Veteran Employment Update
Veterans' Employment & Training Service
U.S. Department of Labor

Each month, the Veterans' Employment & Training Service (VETS) reviews data from the Bureau of Labor Statistics to provide this overview of veteran & nonveteran employment statistics.

Table 1. Unemployment Rates by Cohort⁽¹⁾

| Cohort | Unemployment Rate (%) | | |
|---------------------------------------------|-----------------------|-------------|--------------|
| | Sep-13 | Sep-14 | Change (+/-) |
| Veterans & Nonveterans, ages 18+ | 6.8 | 5.6 | -1.2 |
| All Veterans, ages 18+ | 6.5 | 4.7 | -1.8 |
| Male | 6.3 | 4.2 | -2.1 |
| Female | 7.5 | 7.9 | 0.4 |
| All Nonveterans | 6.8 | 5.7 | -1.1 |
| Veterans, ages 18-24 | 22.8 | 21.3 | -1.5 |
| Male | 28.8 | 24.3 | -4.5 |
| Female | 9.9 | 12.5 | 2.6 |
| Nonveterans, ages 18-24 | 14.0 | 13.1 | -0.9 |
| Veterans, ages 25-34 | 12.1 | 6.2 | -5.9 |
| Male | 11.2 | 5.2 | -6.0 |
| Female | 15.7 | 11.7 | -4.0 |
| Nonveterans, ages 25-34 | 7.0 | 6.1 | -0.9 |
| Veterans, ages 35-44 | 4.7 | 4.7 | 0.0 |
| Male | 5.4 | 3.4 | -2.0 |
| Female | 1.0 | 9.1 | 8.1 |
| Nonveterans, ages 35-44 | 5.5 | 4.2 | -1.3 |
| Veterans, ages 45-54 | 5.3 | 3.5 | -1.8 |
| Male | 5.0 | 3.4 | -1.6 |
| Female | 6.7 | 3.8 | -2.9 |
| Nonveterans, ages 45-54 | 5.3 | 3.9 | -1.4 |
| Veterans, ages 55+ | 5.6 | 4.6 | -1.0 |
| Male | 5.5 | 4.2 | -1.3 |
| Female | 6.8 | 8.6 | 1.8 |
| Nonveterans, ages 55+ | 5.1 | 3.7 | -1.4 |
| Post-9/11 Veterans, ages 18+ | 10.1 | 6.2 | -3.9 |
| Male | 9.7 | 5.3 | -4.4 |
| Female | 11.6 | 10.0 | -1.6 |

Table 2. All Employees by Industry Sector⁽²⁾ from Sep 2013- Sep2014(p)
(Veterans and Nonveterans)

| Industry | Change (+/-) |
|--------------------------------------|--------------|
| Professional and business services | 719,000 |
| Trade, transportation, and utilities | 503,000 |
| Education and health services | 411,000 |
| Leisure and hospitality | 376,000 |
| Construction | 235,000 |
| Manufacturing | 157,000 |
| Financial activities | 96,000 |
| Government | 65,000 |
| Mining and logging | 53,000 |
| Other services | 38,000 |
| Information | 20,000 |

Note: Data in all tables are not seasonally adjusted. Some data points, specifically those related to female veterans, do not meet the Bureau of Labor Statistics' criteria for publishing. Instead, results should be viewed over a longer period of time to better understand trends in unemployment rates. VETS has provided the 24-month unemployment trends on page 2 of this document.

Table 3. State Unemployment Rates⁽³⁾
(Veterans and Nonveterans)

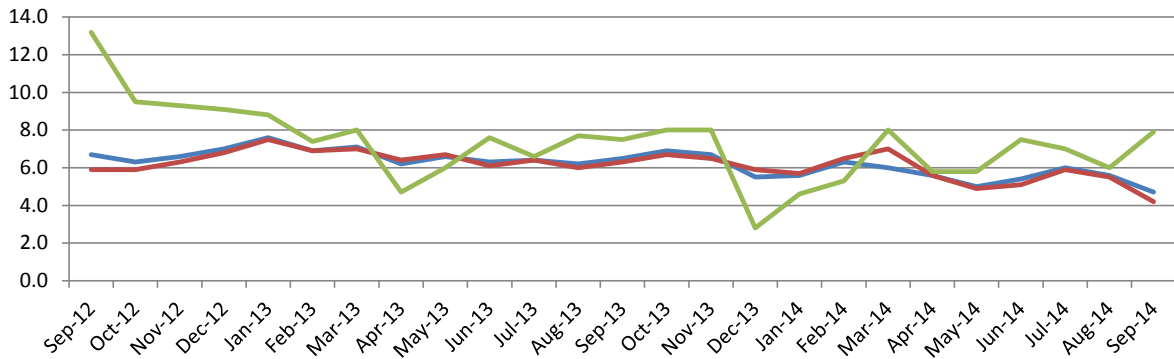
| State | August2013 | August2014(p) | Change (+/-) |
|----------------------|------------|---------------|--------------|
| Alabama | 6.8 | 7.1 | 0.3 |
| Alaska | 5.8 | 6.3 | 0.5 |
| Arizona | 8.4 | 7.3 | -1.1 |
| Arkansas | 7.5 | 6.2 | -1.3 |
| California | 8.9 | 7.4 | -1.5 |
| Colorado | 6.5 | 4.8 | -1.7 |
| Connecticut | 7.9 | 6.9 | -1.0 |
| Delaware | 6.7 | 6.6 | -0.1 |
| District of Columbia | 8.3 | 8.5 | 0.2 |
| Florida | 7.4 | 6.7 | -0.7 |
| Georgia | 8.2 | 8.3 | 0.1 |
| Hawaii | 4.7 | 4.1 | -0.6 |
| Idaho | 5.8 | 4.4 | -1.4 |
| Illinois | 9.1 | 6.7 | -2.4 |
| Indiana | 7.2 | 5.5 | -1.7 |
| Iowa | 4.5 | 4.2 | -0.3 |
| Kansas | 5.7 | 4.8 | -0.9 |
| Kentucky | 8.1 | 6.5 | -1.6 |
| Louisiana | 6.6 | 6.4 | -0.2 |
| Maine | 5.8 | 5.2 | -0.6 |
| Maryland | 6.6 | 6.6 | 0.0 |
| Massachusetts | 7.0 | 6.0 | -1.0 |
| Michigan | 8.8 | 6.7 | -2.1 |
| Minnesota | 4.7 | 3.8 | -0.9 |
| Mississippi | 8.3 | 7.4 | -0.9 |
| Missouri | 6.8 | 6.1 | -0.7 |
| Montana | 5.1 | 4.2 | -0.9 |
| Nebraska | 3.8 | 3.4 | -0.4 |
| Nevada | 9.8 | 7.5 | -2.3 |
| New Hampshire | 5.1 | 4.3 | -0.8 |
| New Jersey | 7.9 | 6.5 | -1.4 |
| New Mexico | 6.9 | 6.9 | 0.0 |
| New York | 7.5 | 6.1 | -1.4 |
| North Carolina | 7.9 | 7.0 | -0.9 |
| North Dakota | 2.7 | 2.4 | -0.3 |
| Ohio | 7.2 | 5.3 | -1.9 |
| Oklahoma | 5.4 | 4.6 | -0.8 |
| Oregon | 7.5 | 7.2 | -0.3 |
| Pennsylvania | 7.6 | 6.1 | -1.5 |
| Rhode Island | 9.7 | 7.8 | -1.9 |
| South Carolina | 7.7 | 7.0 | -0.7 |
| South Dakota | 3.6 | 3.3 | -0.3 |
| Tennessee | 8.3 | 7.4 | -0.9 |
| Texas | 6.4 | 5.5 | -0.9 |
| Utah | 4.6 | 3.7 | -0.9 |
| Vermont | 4.0 | 4.0 | 0.0 |
| Virginia | 5.6 | 5.7 | 0.1 |
| Washington | 6.8 | 5.7 | -1.1 |
| West Virginia | 6.2 | 6.6 | 0.4 |
| Wisconsin | 6.4 | 5.1 | -1.3 |
| Wyoming | 4.1 | 4.1 | 0.0 |

Sources:

- (1) Current Population Survey (CPS)
- (2) Current Employment Statistics (CES) program
- (3) Local Area Unemployment Statistics (LAUS) program
- (p) Preliminary

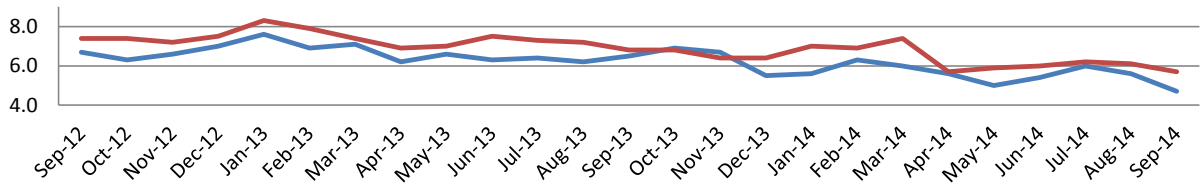
24-Month Unemployment Trends by Veteran Status, Gender, and Post-9/11 Era of Service

Unemployment Rate for Veterans by Gender



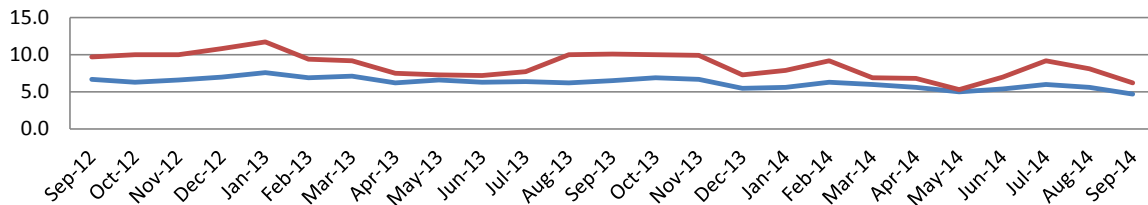
| | Sep-12 | Oct-12 | Nov-12 | Dec-12 | Jan-13 | Feb-13 | Mar-13 | Apr-13 | May-13 | Jun-13 | Jul-13 | Aug-13 | Sep-13 | Oct-13 | Nov-13 | Dec-13 | Jan-14 | Feb-14 | Mar-14 | Apr-14 | May-14 | Jun-14 | Jul-14 | Aug-14 | Sep-14 |
|-------------------|--------|--------|--------|--------|--------|--------|--------|--------|--------|--------|--------|--------|--------|--------|--------|--------|--------|--------|--------|--------|--------|--------|--------|--------|--------|
| — Veterans | 6.7 | 6.3 | 6.6 | 7.0 | 7.6 | 6.9 | 7.1 | 6.2 | 6.6 | 6.3 | 6.4 | 6.2 | 6.5 | 6.9 | 6.7 | 5.5 | 5.6 | 6.3 | 6.0 | 5.6 | 5.0 | 5.4 | 6.0 | 5.6 | 4.7 |
| — Male Veterans | 5.9 | 5.9 | 6.3 | 6.8 | 7.5 | 6.9 | 7.0 | 6.4 | 6.7 | 6.1 | 6.4 | 6.0 | 6.3 | 6.7 | 6.5 | 5.9 | 5.7 | 6.5 | 7.0 | 5.6 | 4.9 | 5.1 | 5.9 | 5.5 | 4.2 |
| — Female Veterans | 13.2 | 9.5 | 9.3 | 9.1 | 8.8 | 7.4 | 8.0 | 4.7 | 6.0 | 7.6 | 6.6 | 7.7 | 7.5 | 8.0 | 8.0 | 2.8 | 4.6 | 5.3 | 8.0 | 5.8 | 5.8 | 7.5 | 7.0 | 6.0 | 7.9 |

Unemployment Rate, Veterans and Nonveterans



| | Sep-12 | Oct-12 | Nov-12 | Dec-12 | Jan-13 | Feb-13 | Mar-13 | Apr-13 | May-13 | Jun-13 | Jul-13 | Aug-13 | Sep-13 | Oct-13 | Nov-13 | Dec-13 | Jan-14 | Feb-14 | Mar-14 | Apr-14 | May-14 | Jun-14 | Jul-14 | Aug-14 | Sep-14 |
|---------------|--------|--------|--------|--------|--------|--------|--------|--------|--------|--------|--------|--------|--------|--------|--------|--------|--------|--------|--------|--------|--------|--------|--------|--------|--------|
| — Veterans | 6.7 | 6.3 | 6.6 | 7.0 | 7.6 | 6.9 | 7.1 | 6.2 | 6.6 | 6.3 | 6.4 | 6.2 | 6.5 | 6.9 | 6.7 | 5.5 | 5.6 | 6.3 | 6.0 | 5.6 | 5.0 | 5.4 | 6.0 | 5.6 | 4.7 |
| — Nonveterans | 7.4 | 7.4 | 7.2 | 7.5 | 8.3 | 7.9 | 7.4 | 6.9 | 7.0 | 7.5 | 7.3 | 7.2 | 6.8 | 6.8 | 6.4 | 6.4 | 7.0 | 6.9 | 7.4 | 5.7 | 5.9 | 6.0 | 6.2 | 6.1 | 5.7 |

Unemployment Rate, All Veterans and Post-9/11 Era Veterans



| | Sep-12 | Oct-12 | Nov-12 | Dec-12 | Jan-13 | Feb-13 | Mar-13 | Apr-13 | May-13 | Jun-13 | Jul-13 | Aug-13 | Sep-13 | Oct-13 | Nov-13 | Dec-13 | Jan-14 | Feb-14 | Mar-14 | Apr-14 | May-14 | Jun-14 | Jul-14 | Aug-14 | Sep-14 |
|----------------------|--------|--------|--------|--------|--------|--------|--------|--------|--------|--------|--------|--------|--------|--------|--------|--------|--------|--------|--------|--------|--------|--------|--------|--------|--------|
| — Veterans | 6.7 | 6.3 | 6.6 | 7.0 | 7.6 | 6.9 | 7.1 | 6.2 | 6.6 | 6.3 | 6.4 | 6.2 | 6.5 | 6.9 | 6.7 | 5.5 | 5.6 | 6.3 | 6.0 | 5.6 | 5.0 | 5.4 | 6.0 | 5.6 | 4.7 |
| — Post-9/11 Veterans | 9.7 | 10.0 | 10.0 | 10.8 | 11.7 | 9.4 | 9.2 | 7.5 | 7.3 | 7.2 | 7.7 | 10.0 | 10.1 | 10.0 | 9.9 | 7.3 | 7.9 | 9.2 | 6.9 | 6.8 | 5.3 | 7.0 | 9.2 | 8.1 | 6.2 |